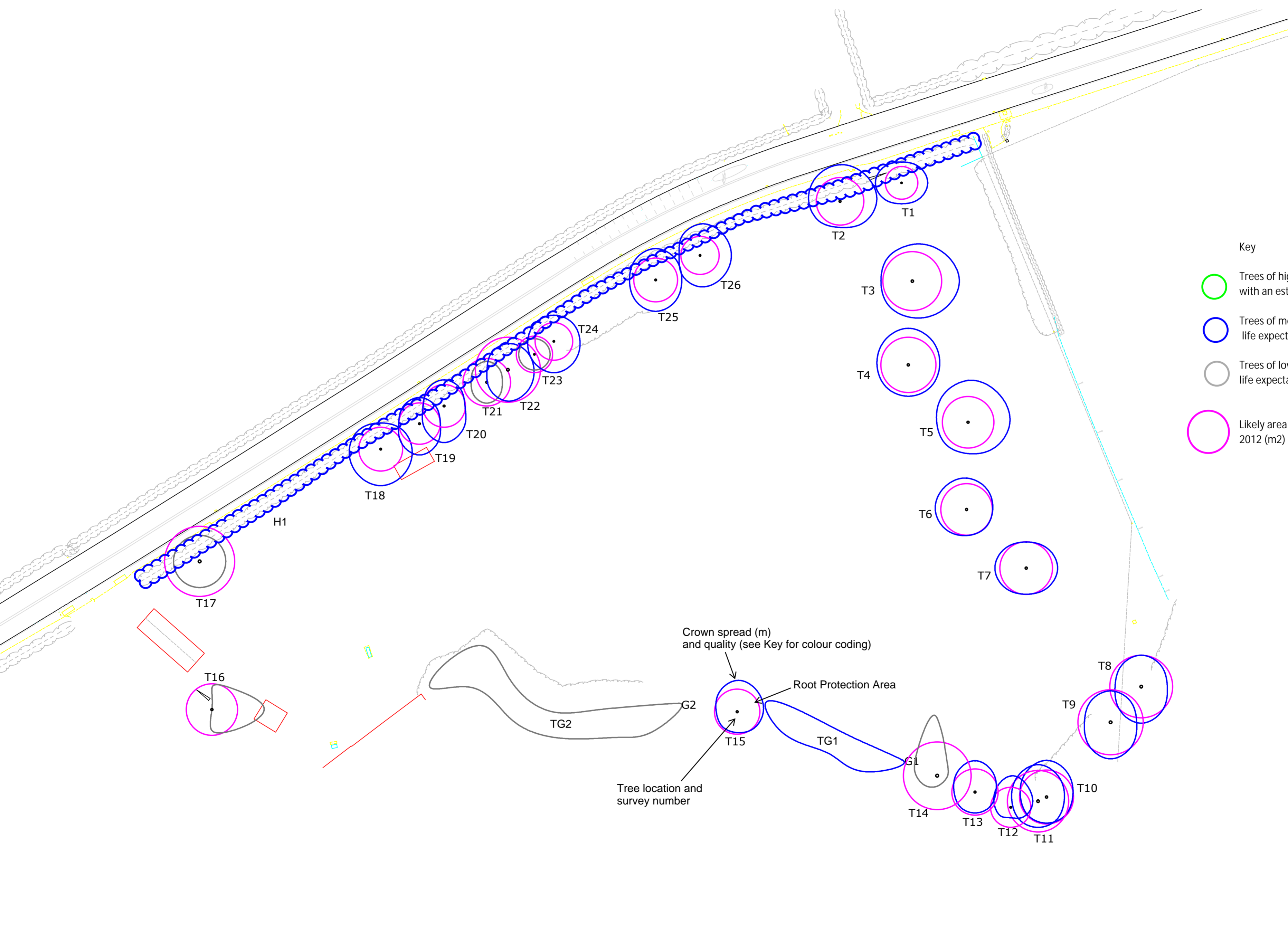


# Appendix 2



- Key**
- Trees of high quality and value in accordance with BS5837:2012 with an estimated remaining life expectancy of at least 40 years
  - Trees of moderate quality and value with an estimated remaining life expectancy of at least 20 years
  - Trees of lower quality and value with an estimating remaining life expectancy of at least 10 years
  - Likely area of root spread calculated in accordance with BS5837: 2012 (m2)

Crown spread (m) and quality (see Key for colour coding)

Root Protection Area

Tree location and survey number

TG1

TG2

**Clifton Hampden: Site B**  
 Abingdon Road  
 Clifton Hampden  
 Oxon  
 OX14 3EG

**Drawing Title:**  
 Tree Constraints

**Date:**  
 30 June 2020

**Scale:**  
 1:500 on A2